

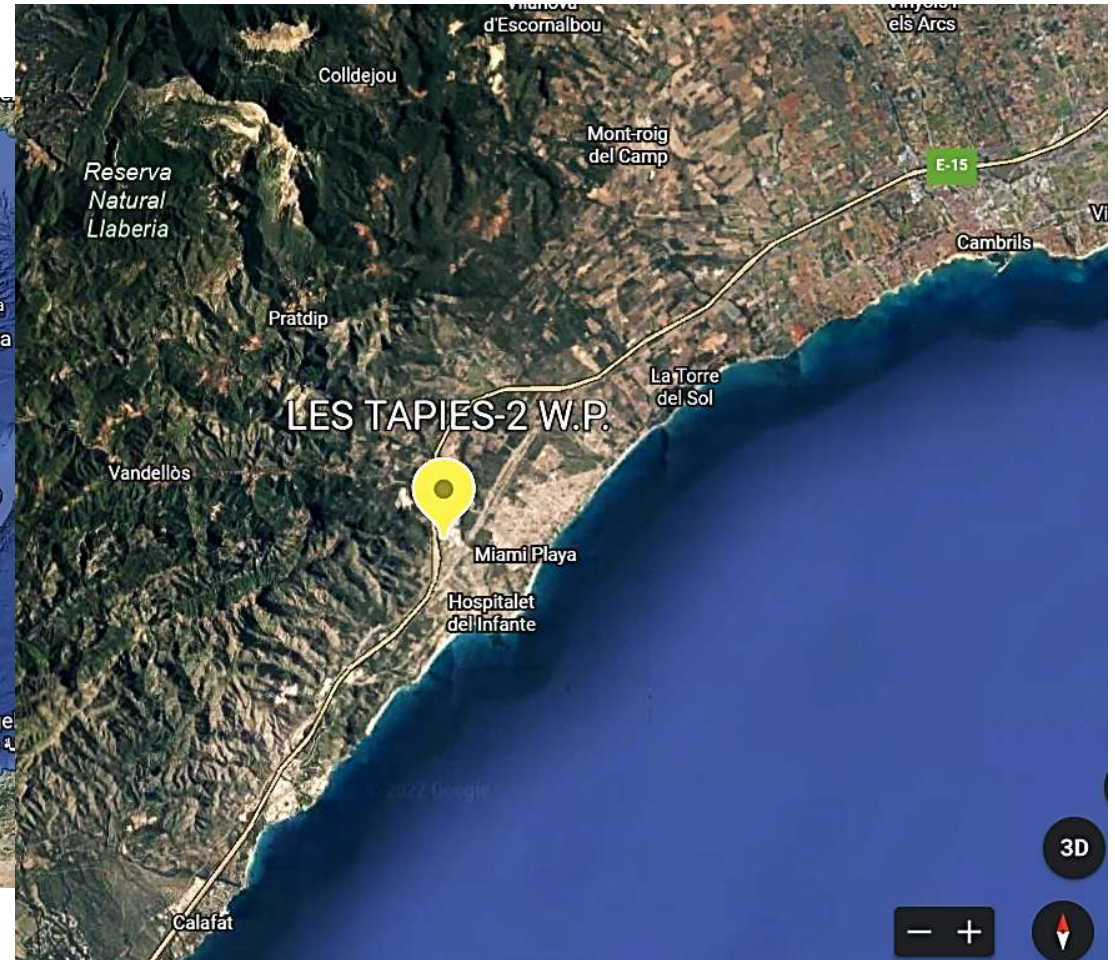


**WIND PROJECT GRID CONNECTED**  
**4,8 MW**  
**LES TAPIES 2**

**Feb - 26**

# PROJECT SITE LOCATION

## L' Hospitalet de L'Infant (Tarragona, Cataluña, Spain)



# SITE LAND PLOT

LES TAPIES-2 W.P. Land Plot





## PROJECT SITE

---

### Land Plot Data:

- Cadastral Ref. N°: 4314411CF2441S0001AL
- Industrial land: CL SEVERO OCHOA (01), 19

- Town: L'Hospitalet de L'Infant
- Municipality: Vandellós y L'Hospitalet de L'Infant
- Province: Tarragona, Cataluña, Spain

### Land Status:

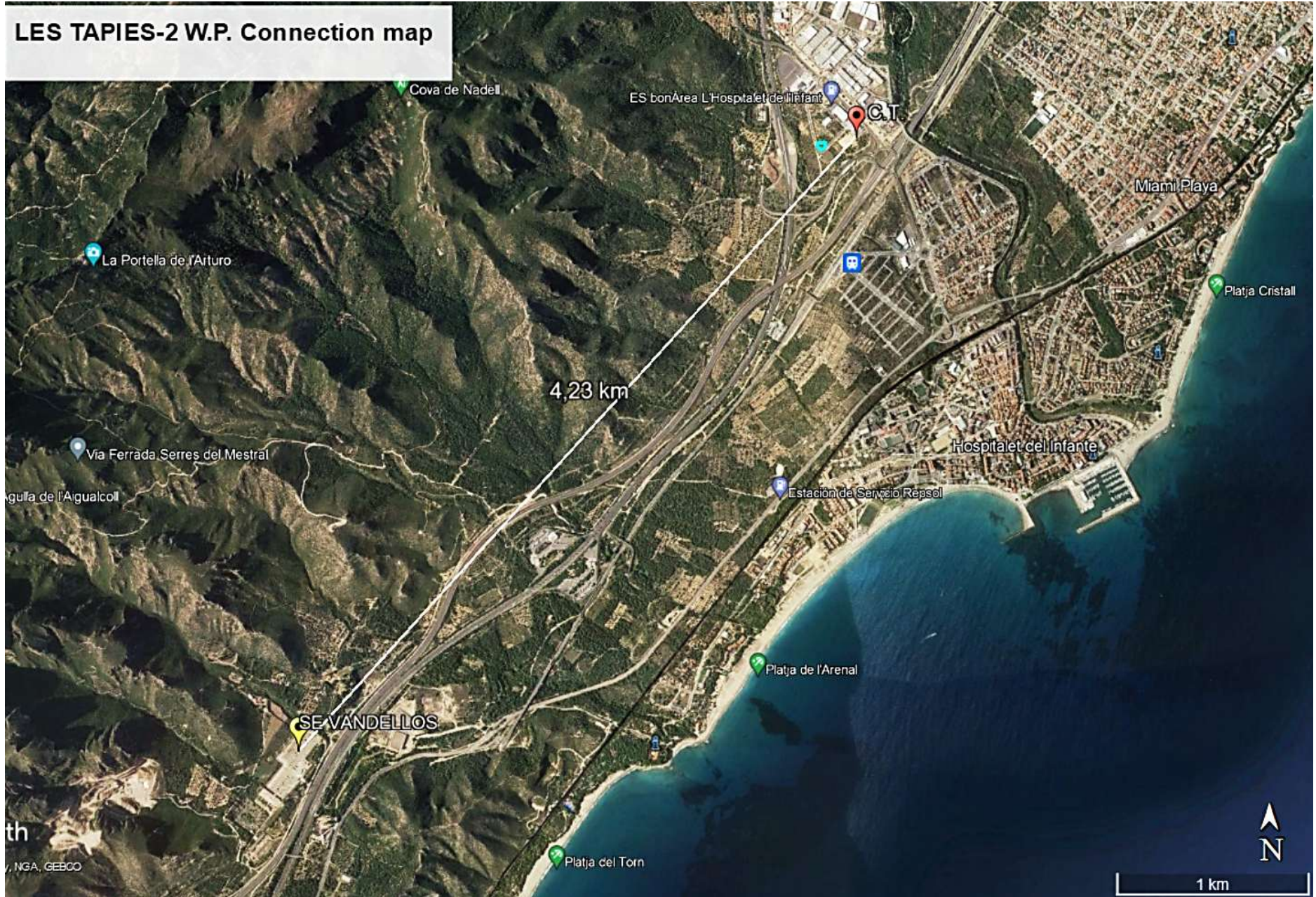
- Total surface: 1.225 m<sup>2</sup>
- Rent / Purchase Price: 100 €/m<sup>2</sup> Estimated Purchase value
- Call Option: 2.000 €

### Grid Connection:

- Existing Transformation Center (C.T.) to Medium Voltage of 25 kV at 165 m straight line from site (Industrial Area). Best Option for the Grid Connection
- The nearest Electric Substation (S.E.) VANDELLOS at 4,8 km straight line and published capacity on february 2026 of **27,73 MW in 25 kV**

# GRID CONNECTION

LES TAPIES-2 W.P. Connection map





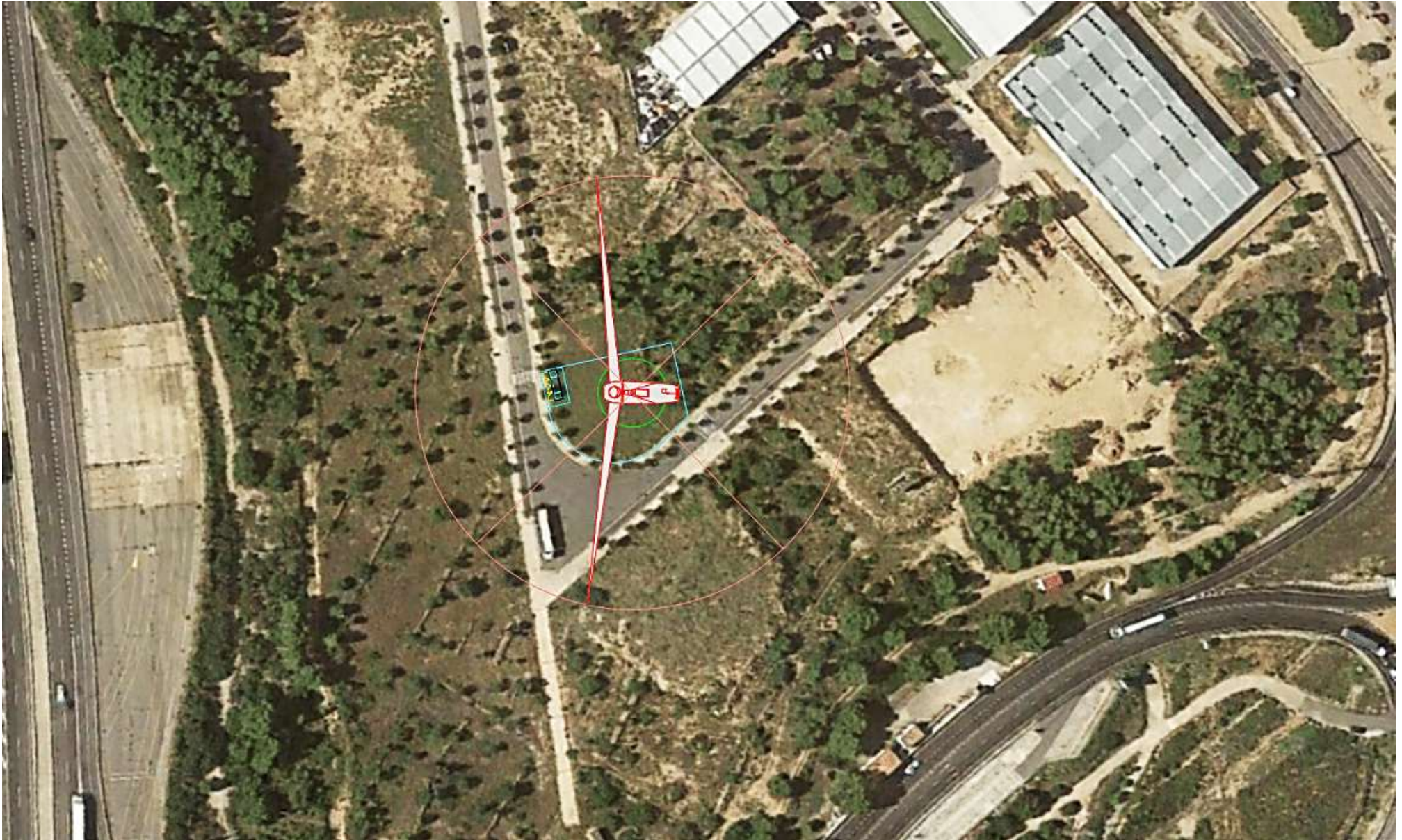
## MAIN WIND / PRODUCTION DATA

---

### Main Project Features:

- Average Wind Speed : **8,65 m/s**
- Hub Height: **150 m**
- Equivalent Hours: **3.165**
- Capacity Factor: **36,13 %**
- Net Produced Energy: **15.200 MWh/year**
- Installed Power: **4.800 kW**
- N° of Wind Genertors: **1**

# LAY OUT



# 3D SIMULATION IMAGE

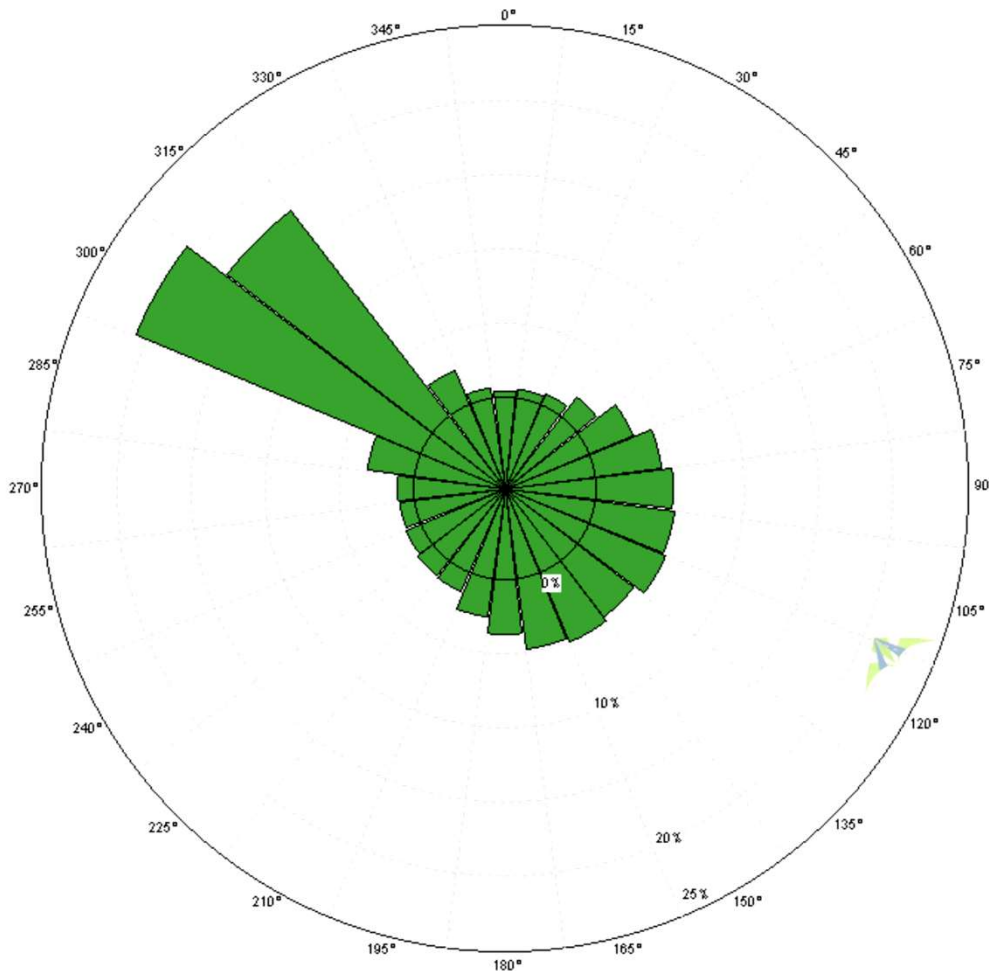


# WIND RESOURCE ANALYSIS

## Datos de simulación de viento a 100 metros

Media (m/s)	Mínima (m/s)	Máxima (m/s)	Std. Dev (m/s)	Weibull k
<b>8,40</b>	0,02	32,29	5,79	1,26

**Tabla 1:** Datos de simulación basado en modelos.



## NORDEX N133 4.8

Número de turbinas	1
Altura de buje (m)	150
Potencia máquina (kW)	4.800
Velocidad del viento (m/s)	8,65
Energía bruta (GWh/año)	16,00
Energía neta (GWh/año)	15,20
Pérdidas (%)	5
Factor de capacidad (%)	36,13
Horas Equivalentes	3.165



[www. mariotto-bess-solutions.com](http://www.mariotto-bess-solutions.com)